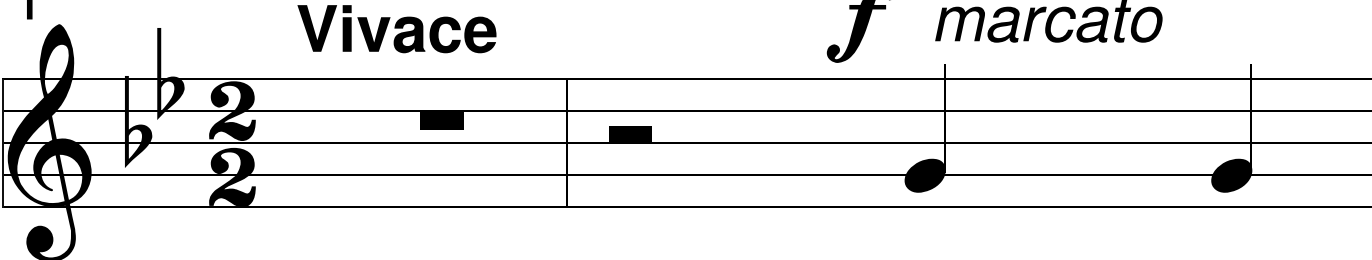


# Personent hodie

*J. Rutter (arr.)*

1 **Vivace** *f marcato*

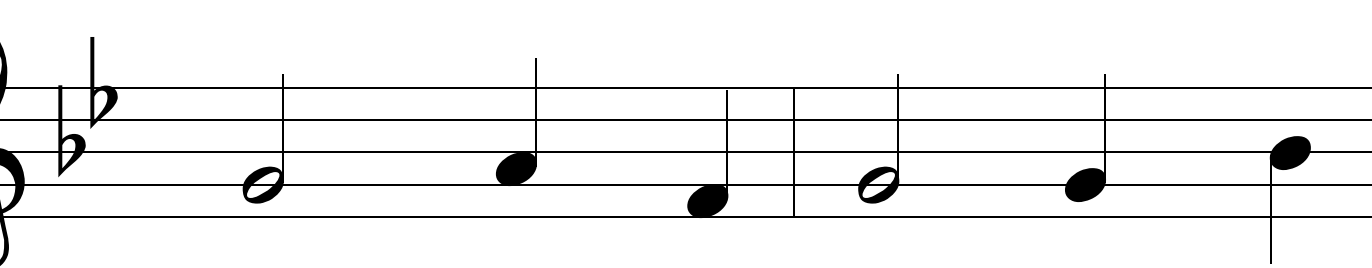
Alto



Per - so -

3

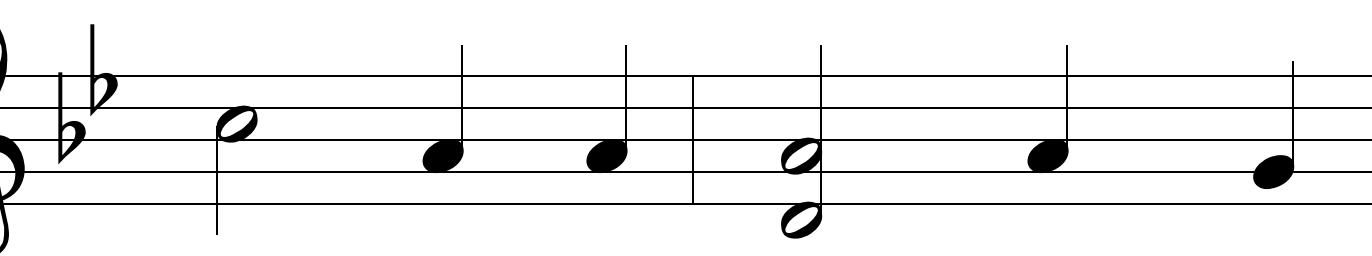
A.



- nent ho - di - e Vo - ces

5

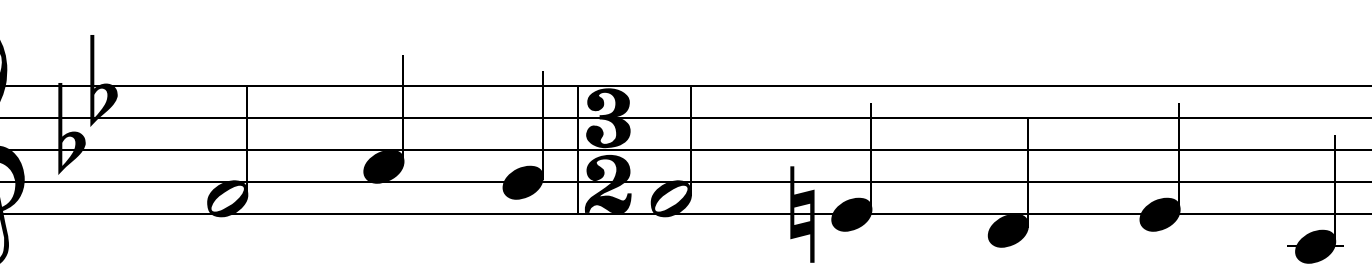
A.



pu - e - ru - lae Lau - dan -

7

A.



- tes ju - cun - de Qui no - bis est

9

A.

na - tus, Sum - mo De - o

11

A.

da - tus, — vir, vir,

più *f*

13

A.

vir, vir, vir,

15

A.

vir et de vir - gi - ne -

Personent hodie

3/8

17  
A.

- o Ven - tre pro - cre - a - tus.

20  
A. *mp*

In mun - do na - sci - tur; Pan - nis

23  
A.

in - vol - vi - tur; Prae - se -

25  
A.

- pi po - ni - tur Sta - bu - lo bru -

27  
A.

- to - rum Re - ctor su - per -

Personent hodie

*mf*

4/8

29

A.

- no - rum; — Per - di -

30

A.

- dit, dit, dit, per - di -

32

A.

- dit, dit, dit, per - di -

34

A.

- dit spo - li - a Prin - ceps in - fer -

36

A.

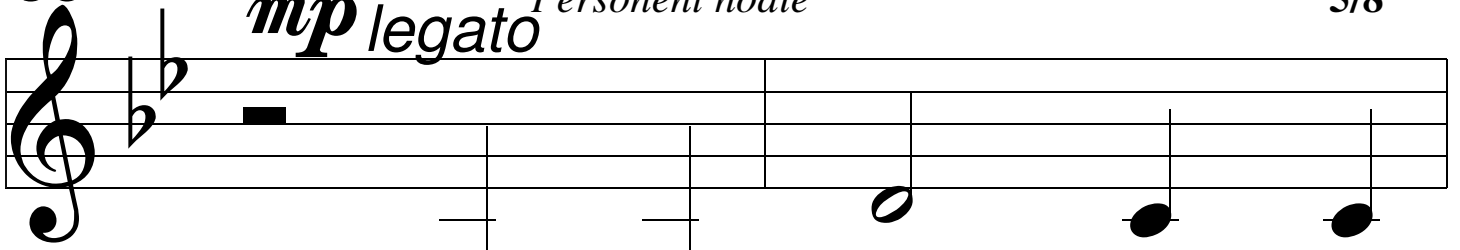
- no - - rum.

38

*mp* legato *Personent hodie*

5/8

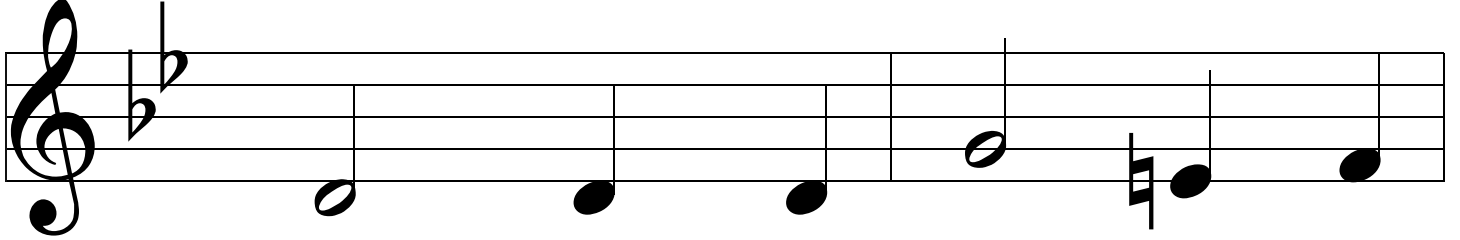
A.



Ma - gi tres ve - ne -

40

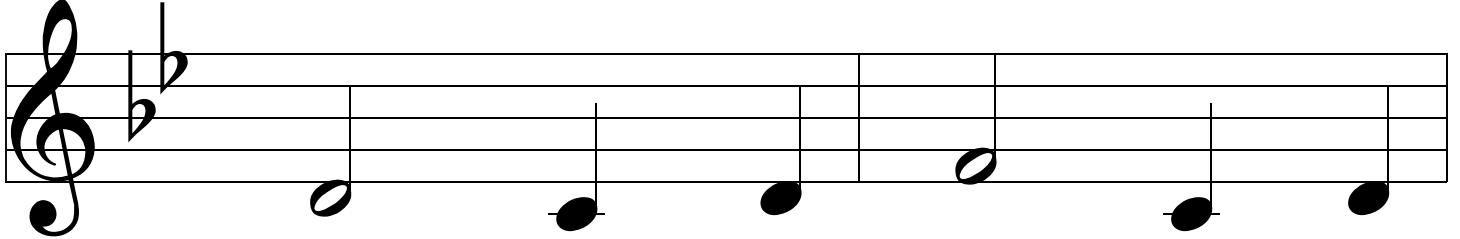
A.



- runt; Mu - ne - ra of - fe -

42

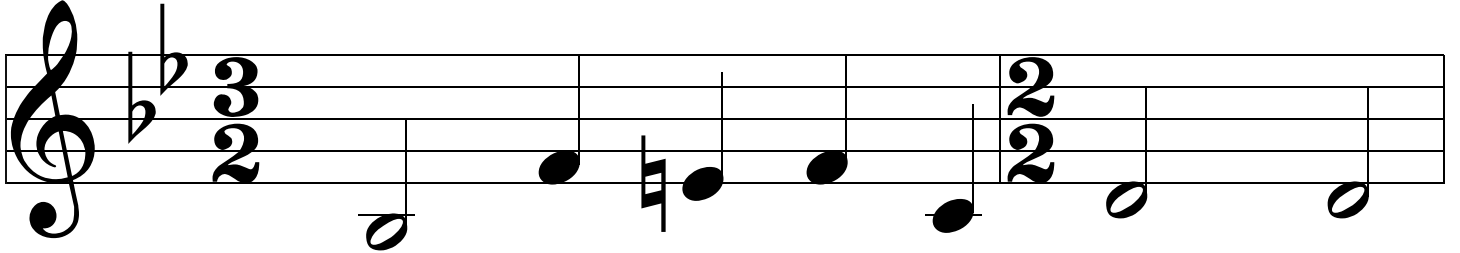
A.



- runt; Par - vu - lum in - qui -

44

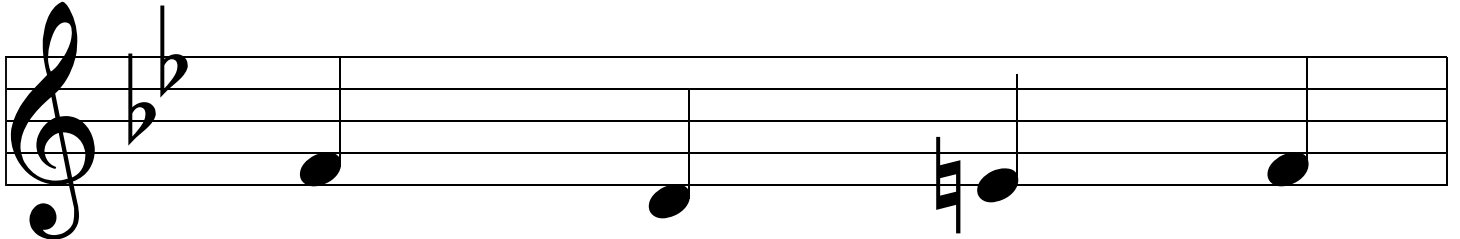
A.



- runt, Stel - lu - lam se - quen - do,

46


A.

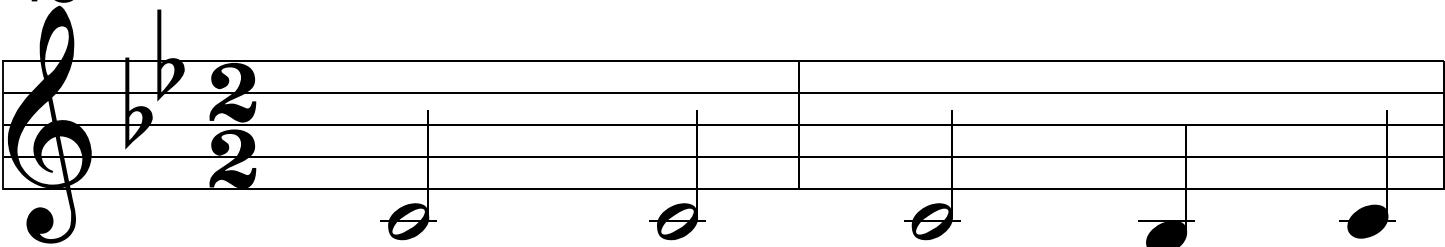


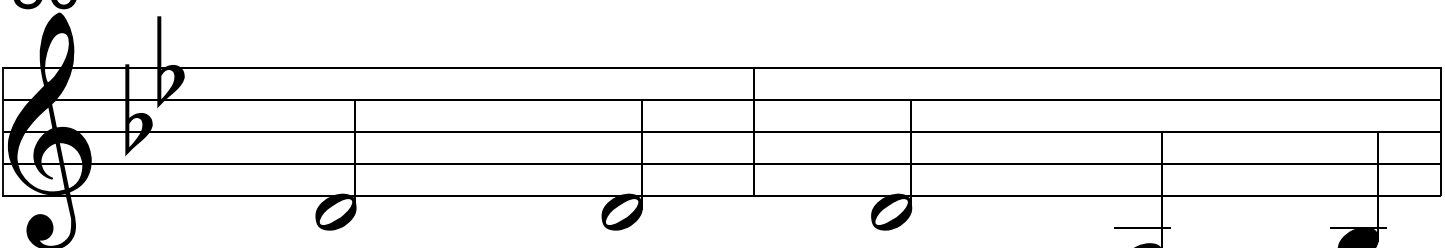
Ip - sum a - do -

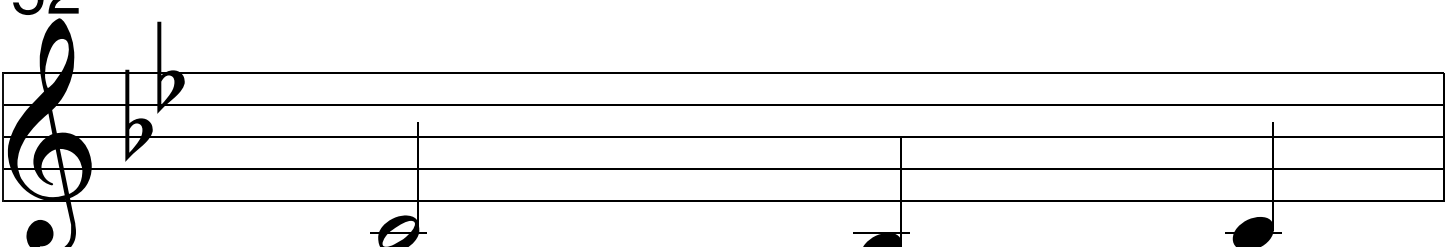
*Personent hodie*

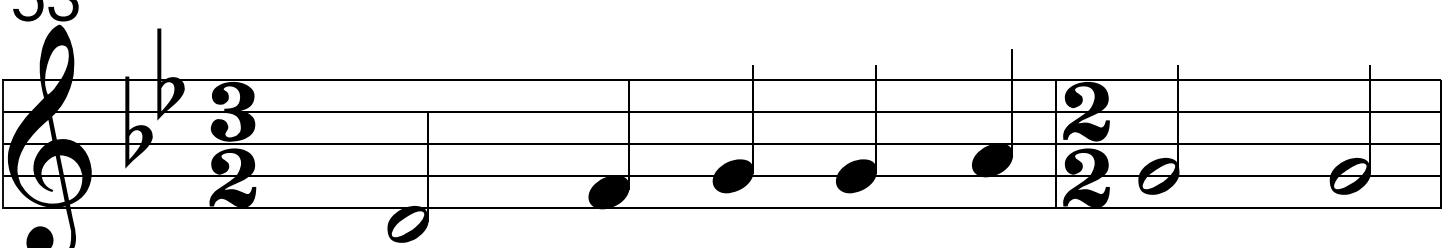
6/8

47  
A.  **-ran - do, — Au - rum**

48  
A.  **thus, thus, thus, au - rum**

50  
A.  **thus, thus, thus, au - rum**

52  
A.  **thus et my -**

53  
A.  **-rrham E - i of - fe - ren - do.**

55

*f* Personent hodie

7/8

A.

Om - nes cle - ri - cu -

58

A.

- li, Pa - ri - ter pu - e -

60

A.

- ri, Can - tent ut an - ge -

62

A.

- li: 'Ad - ve - ni - sti

63

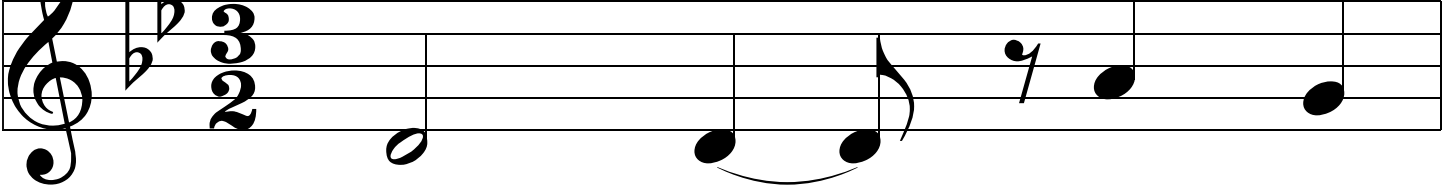
A.

mun - do: Lau - des ti - bi

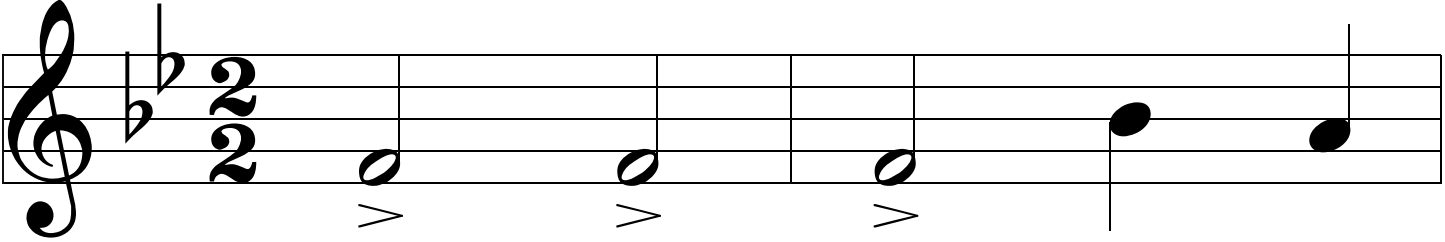
*Personent hodie*

***ff***

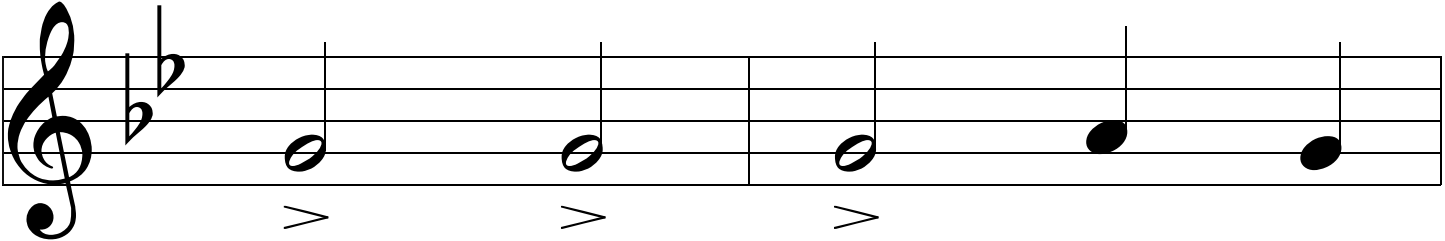
8/8

65  
A.  Musical staff for measure 65, treble clef, key signature of two flats, 3/2 time signature. The melody consists of a half note G4, followed by a quarter note A4, a quarter note Bb4, and a quarter note C5.

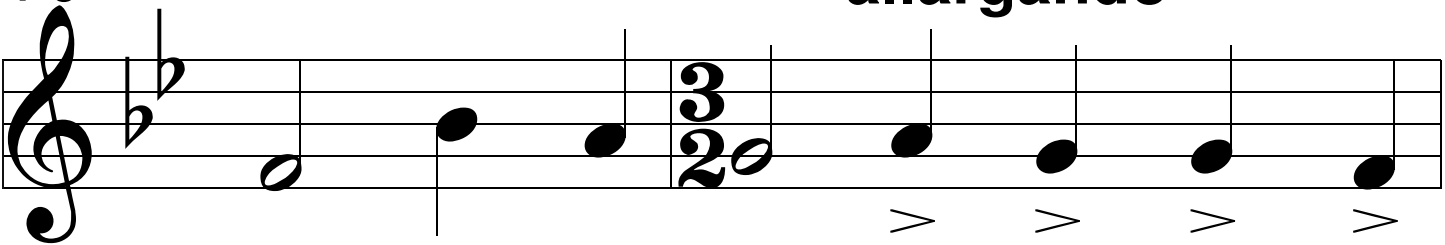
fun - do — I - de -

66  
A.  Musical staff for measure 66, treble clef, key signature of two flats, 2/2 time signature. The melody consists of a half note G4, a half note A4, a half note Bb4, and a half note C5.

- o, o, o, i - de -

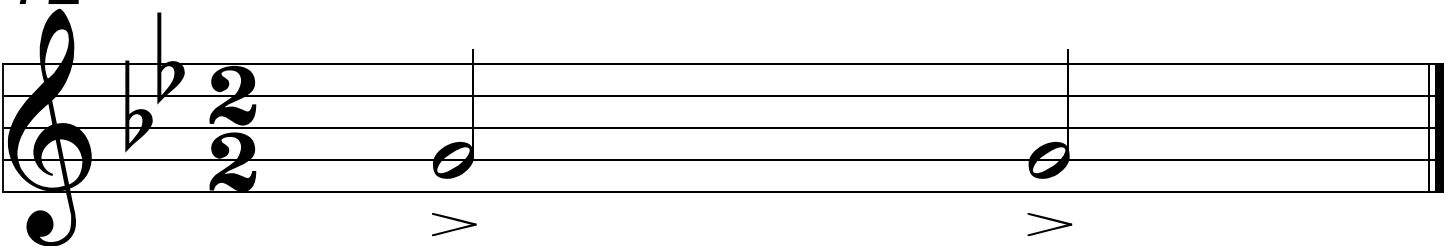
68  
A.  Musical staff for measure 68, treble clef, key signature of two flats, 2/2 time signature. The melody consists of a half note G4, a half note A4, a half note Bb4, and a half note C5.

- o, o, o, i - de -

70  
A.  Musical staff for measure 70, treble clef, key signature of two flats, 3/2 time signature. The melody consists of a half note G4, a quarter note A4, a quarter note Bb4, a quarter note C5, a quarter note G4, a quarter note A4, a quarter note Bb4, and a quarter note C5.

**allargando**

- o glo - ri - a In ex - cel - sis

72  
A.  Musical staff for measure 72, treble clef, key signature of two flats, 2/2 time signature. The melody consists of a half note G4 and a half note A4.

De - - o.'